

# Transitioning into the Future!

**June 2018 Convening**



**New Hampshire  
Health & Equity Partnership**

*Opening Pathways to Health in New Hampshire*



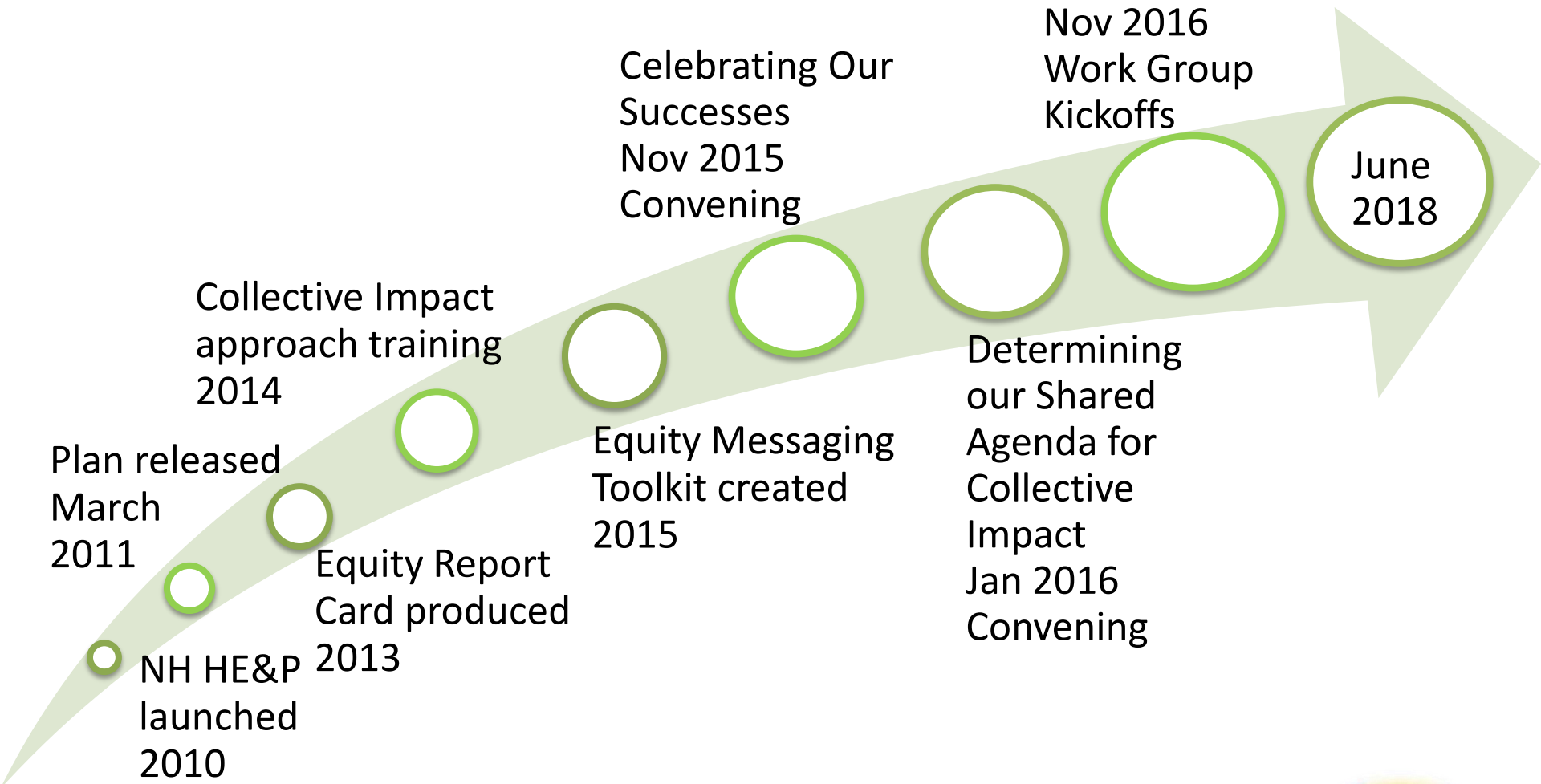
# **THE NH H&EP JOURNEY: Past to Present**

*Our Vision:*

**Everyone in New Hampshire  
has a fair opportunity to live  
a long, healthy life**



# Key Steps



## NH H&EP's Mission

To increase the success and effectiveness of public and private initiatives that work to promote health and equity for racial, ethnic, and linguistic minorities, and address the determinants of health through the collaboration of partners, leaders, and stakeholders committed to action within New Hampshire.

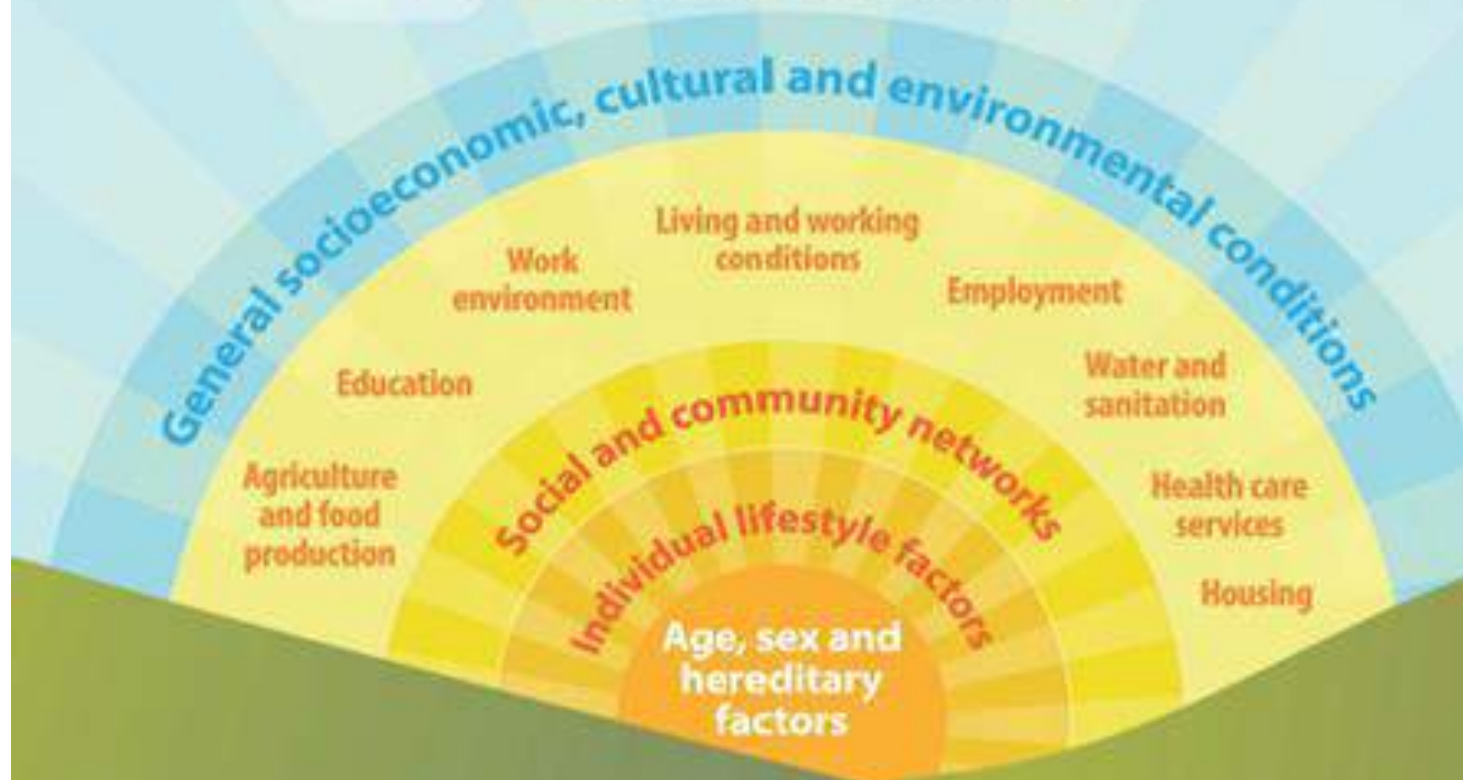
## Shared Vision

Everyone  
in New  
Hampshire  
has a fair  
opportunity  
to live a long,  
healthy life.



New Hampshire  
Health & Equity Partnership

# Creating Pathways to Health in NH



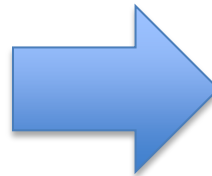
**Good health starts in our communities, schools and homes.**

# Priorities for action

## The Plan

## Common Agenda

- Workforce Diversity
- Race Ethnicity and Language (REaL) Data
- Culturally Effective Organizations



**25 Recommendations**

**3 Shared Priorities!**

# We're working together to get to **OUTCOMES**

Collective Impact is the  
method/process we use

*How do we work together?*





# Five Conditions of Collective Impact

*Collective Impact is the commitment of a group of important actors from different sectors to a common agenda for **solving a complex social issue***

## **Common Agenda**

- Keeps all parties moving towards the same goal

## **Common Progress Measures**

- Measures that get to the TRUE outcome

## **Mutually Reinforcing Activities**

- Each expertise is leveraged as part of the overall

## **Communications**

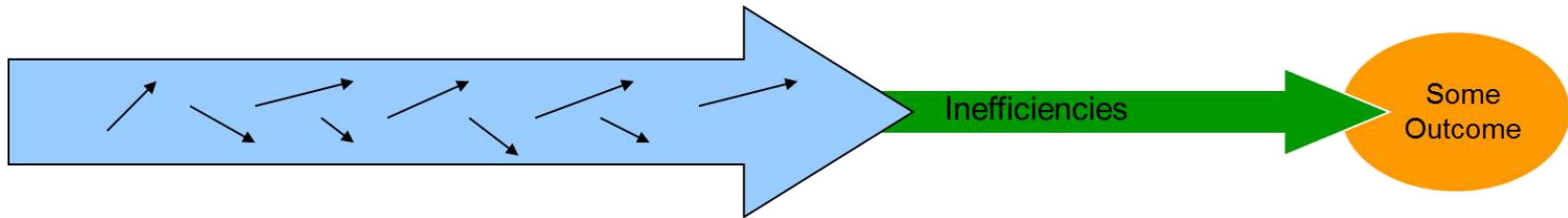
- This allows a culture of collaboration

## **Backbone Organization**

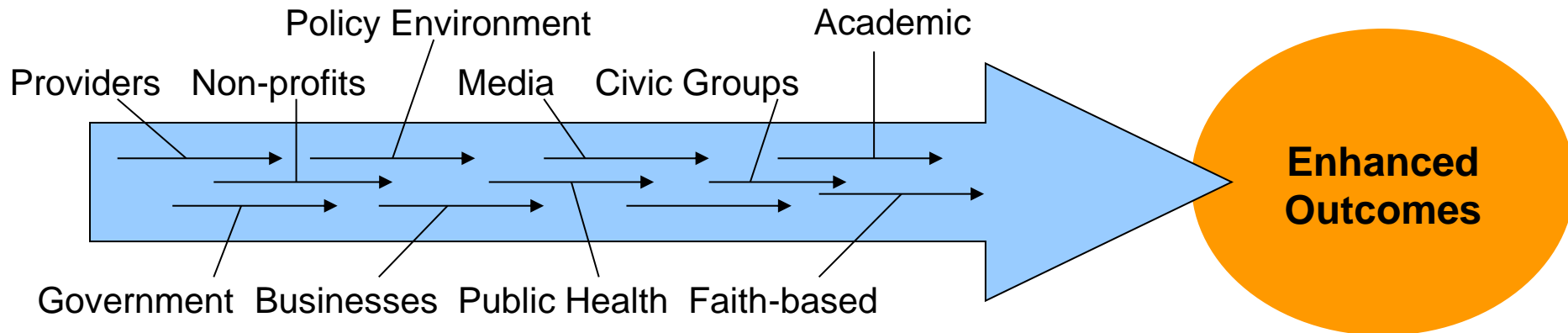
- Takes on the role of managing collaboration

# Creating Alignment

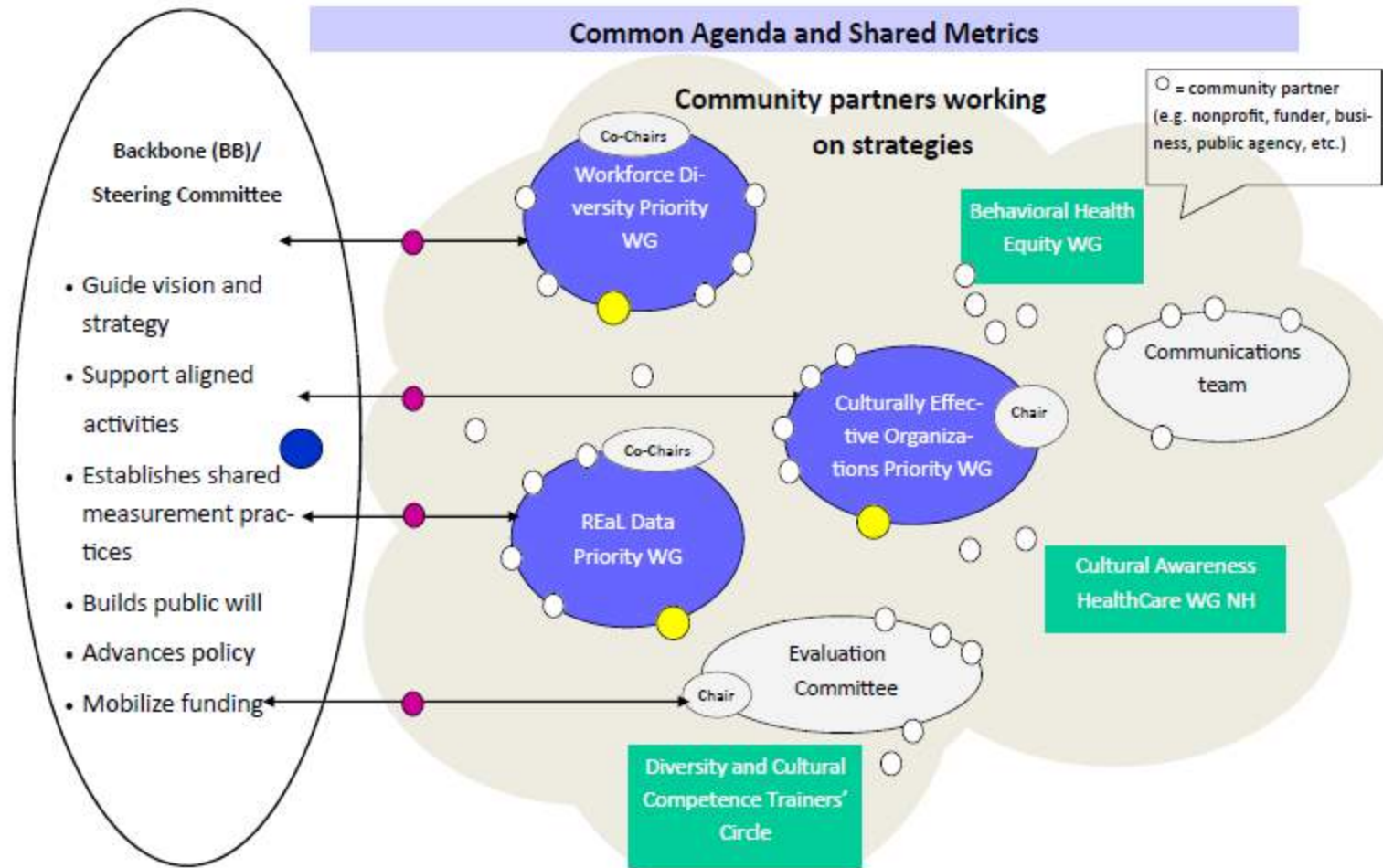
**Working in isolation = Isolated Impact**



**Working together = Collective Impact**



# H&EP Structure



Steering committee, work groups and backbone functions all play pivotal roles in Collective Impact

- Program Director
- Affiliated entities
- Liaison between workgroups and BB
- Liaison between WG and EC
- Priority workgroups
- WG = Work Group

# Five Conditions of Collective Impact

*Collective Impact is the commitment of a group of important actors from different sectors to a common agenda for **solving a complex social issue***

## **Common Agenda**

- Keeps all parties moving towards the same goal

## **Common Progress Measures**

- Measures that get to the TRUE outcome

## **Mutually Reinforcing Activities**

- Each expertise is leveraged as part of the overall

## **Communications**

- This allows a culture of collaboration

## **Backbone Organization**

- Takes on the role of managing collaboration



Foundation for  
Healthy Communities

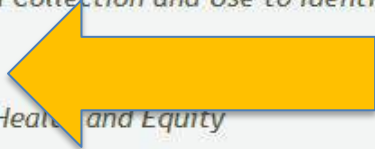
Search

[Home](#) [About Us](#) [Directions](#) [Contact Us](#) [Initiatives](#) [Publications](#)



## New Hampshire Health & Equity Partnership

- ▶ *NH Health & Equity Partnership*
- ▶ *About Us*
- ▶ *Access to Care*
- ▶ *Addressing Environments Where We Live, Learn, Work and Play to Improve Health*
- ▶ *Awareness and Promotion of Health Equity*
- ▶ *Improving Data Collection and Use to Identify Issues*
- ▶ *E-Newsletter*
- ▶ *Resources for Health and Equity*



[Contact Us](#)

## NH Health & Equity Partnership

*Seeking a fair opportunity to live a long, healthy life for all*



New Hampshire is one of the healthiest states in the country, but not everyone who resides here has a fair opportunity for health.

We need to stop thinking about health as something we get at the doctor's



## New Hampshire Health & Equity Partnership

- ▶ *NH Health & Equity Partnership*
- ▶ *About Us*
- ▶ *Access to Care*
- ▶ *Addressing Environments Where We Live, Learn, Work and Play to Improve Health*
- ▶ *Awareness and Promotion of Health Equity*
- ▶ *Improving Data Collection and Use to Identify Issues*
- ▶ *E-Newsletter*
- ▶ *Resources for Health and Equity*

### Contact Us

Nathalie Ahyi-Amendah  
 Director of the NH Health and Equity Partnership  
 125 Airport Road  
 Concord, NH 03301  
 (603) 415-4272  
 nahyi@healthynh.com

### Join our NH HEP Google Group

*Click here to join!*

Dear Partner in Equity:

This Equity List is powered by the good ideas and contributions of all of our members. We invite you to share resources and upcoming events that are relevant to advancing health and equity for all people in NH. You have the option to manage your email delivery mode (all email, abridged email, Digest email which is a compilation of multiple emails, or No email) by clicking on "My groups" in your Google group account.

As a member of the NH HEP google group you can

## E-Newsletters

We hope you enjoy our newsletter and find it a helpful resource. We publish stories bi-monthly that focus on local communities, upcoming events, policy updates, and statewide news.

In addition to our newsletter, you can also follow us on *Facebook* for more up-to-date postings. Thank you for your partnership and continued support.

- June 2018: Your Guide to Equity in NH*
- February 2018: Engaging Diverse Perspectives*
- December 2017: Collective Impact Effort*
- September 2017: Weaving Communities Together*
- July 2017: Working Together on Innovative Solutions*
- April 2017: Charging Ahead!*
- February 2017: Updates on our Three Priority Workgroups*
- December 2016: Seasons Greetings!*
- October 2016: Partnership Update*
- August 2016: Spotlight on Equity in NH*
- May 2016: Announcing Our New Priorities*
- March 2016: Working Together to Determine our New Priorities*
- January 2016: An Exciting Year for Health and Equity in New Hampshire!*
- October 2015: Welcome to Our First Newsletter!*

14 Issues

## Social Media Toolkit



**NHHEP  
Social Media Guide  
2018**

This toolkit is designed to help the members of the Partnership learn about social media and its uses, the different platforms, best practices, and how to manage the platforms that the Partnership currently uses.

### *Download the Social Media Guide*

Please reference back to it at any time in regards to all things social media.

NEW!!

# Work Groups

Working with other partners on these three priorities areas



# Key Steps

